



WESLEYAN

ACCELERATING **EQUALITY FOR WOMEN** SINCE 1836

**VIEWBOOK FOR INTERNATIONAL  
APPLICANTS FALL 2026**

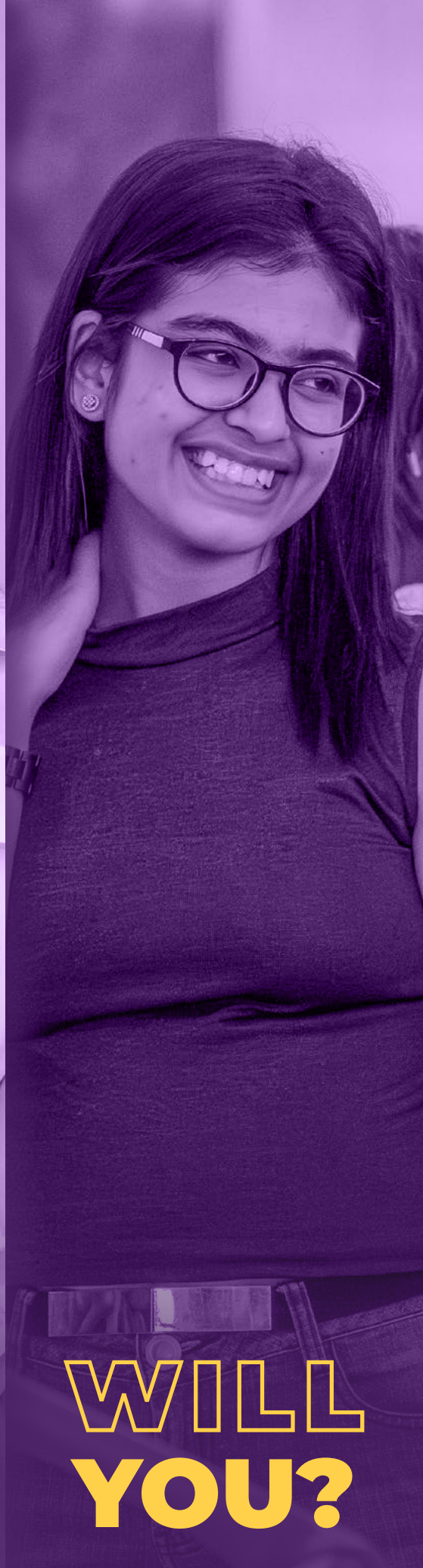




**SHE  
HAS**



**SHE  
WILL**



**WILL  
YOU?**

# WELCOME TO WESLEYAN

Choosing to study abroad is bold — and deeply inspiring. It means believing in yourself, in your future and in what's possible when women lead.

At Wesleyan College, we believe in you.

We are the first college in the world chartered to grant degrees to women — a legacy of empowerment that spans nearly 200 years. Today, our campus is home to students from across the United States and around the world, all connected by a shared purpose: to learn, to grow and to lead.

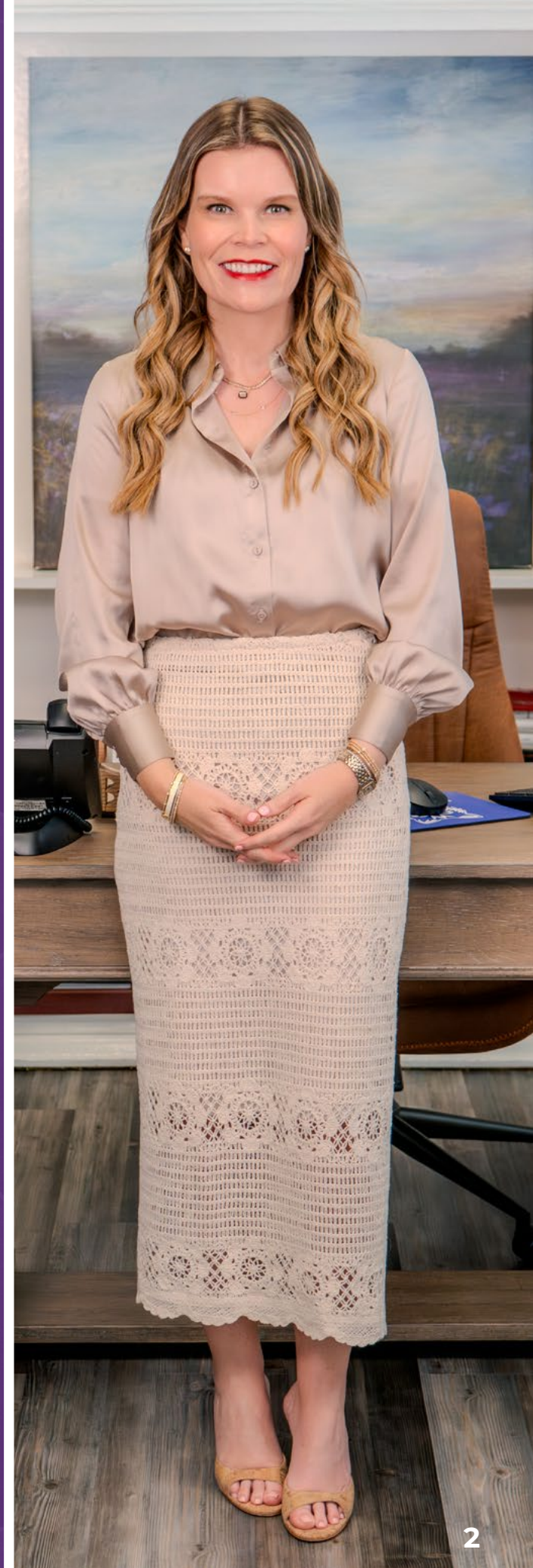
As Wesleyan's 26th president — and a first-generation college graduate who relocated with my family from Canada to Macon, Georgia — I understand the challenges and rewards of forging a new path in a new place. That's why our team is committed to supporting you through every step of your journey. From your first visa question to your final class, you'll never be alone here.

At Wesleyan, you'll gain more than just a degree. You'll develop the skills and confidence to shape your future, supported by professors who know your name and mentors who believe in your potential. You'll be part of a community that dismantles barriers that have historically limited women in the classroom, the boardroom, the operating room and every space where leadership matters.

Through guaranteed internships, leadership programs and personalized support, our students graduate ready to thrive — in careers, in graduate study and in life. The world needs more women who lead with conviction and courage. At Wesleyan, you'll find the tools, guidance and community to become one of them. Warmly,

Meaghan Blight  
President, Wesleyan College

**CONNECT WITH PRESIDENT BLIGHT  
ON INSTAGRAM @WESCOPRESIDENT**





## THE FIRST UNIVERSITY IN THE WORLD CHARTERED TO GRANT DEGREES TO WOMEN

No matter your story—where you come from, what you’ve experienced, or how you’ve been defined—at Wesleyan, everyone begins with a clean slate. Here, you arrive with equal access to limitless opportunities and leave empowered to lead.



**TOP 6**  
Out of 131  
Regional  
Universities in  
the South  
U.S. News &  
World Report  
2025



**VOTED BEST  
COLLEGE/  
UNIVERSITY**  
in Middle  
Georgia 2023  
& 2024



**TOP 3**  
College For  
contribution  
to the public  
good  
Washington  
Monthly 2024

# 1836

Founded in 1836  
A Nearly 200 Year Legacy  
of Prestige

# 96%

Of Wesleyan Alumnae Are Employed or  
in Graduate School

# 98%

Student Retention Rate (Fall  
2023-2025). Students Thrive at  
Wesleyan.

# 1st

The World's 1st  
Alumnae Association Will  
Be Your Personal Career  
Network

# 100%

of Students  
Engage in paid  
internships, research or  
study abroad

# 20

Students or Less  
in Most Classes

# 4

4-Year Housing Guarantee  
Live Your Best Life on Our  
Gorgeous, Safe Campus

### WHERE WESLEYAN ALUMNAE ARE EMPLOYED



3



### WHERE WESLEYAN ALUMNAE ARE ACCEPTED FOR MASTER'S & PHD PROGRAMS



**Women Earn Only 83 Cents for Every Dollar Men Earn.  
Just 28% of STEM Workers in the U.S. Are Women.  
Globally, it will take 131 Years to Close the Gender Gap.**

## We Can Fix That.

### WE'RE ACCELERATING EQUALITY FOR WOMEN.

#### WE ACCELERATE YOUR CONFIDENCE—SPEAK UP, STEP UP, STAND OUT

Every Wesleyan class is your personal confidence lab. For four years, you can experience speaking up, leading meetings, debating in Model U.N., and presenting research—thoughtfully curated opportunities to amplify your unique talents and confidently claim your place at important tables. Embrace calculated risks in a safe, supportive, all-women environment that doesn't just encourage confidence – it insists on it. .

#### WE ACCELERATE YOUR CAREER—HIGH-IMPACT LEADERSHIP PREPARATION

Every university grants a degree—but at Wesleyan, it's about how your education is delivered, especially for women. When your moment comes to take a seat at powerful tables, you'll already feel at home—because at Wesleyan, you've spent four years training to be there.

#### WE ACCELERATE YOUR COMMUNITY CONNECTIONS—THE WORLD COMES TOGETHER AT WESLEYAN

Our rich history of welcoming international students dates to the very first international students who came to the U.S. in the early 1900s. Today, our vibrant campus proudly celebrates global cultures and traditions from Diwali and Lunar New Year to Eid and Holi, creating deep bonds and lifelong friendships. Wesleyan's campus culture of women championing women stands out. This is a campus where you belong.

**“Let’s build a world where every girl can learn, lead, and live with dignity. The time is now. The future is hers”**

- United Nations India with Wesleyan College  
President Meaghan Blight





# SHE WILL PURSUE HER PATH

Design the degree of your dreams and learn in classes of fewer than 20 students, where your ideas ignite lively discussions, passionate debates, hands-on research and immersive real-world simulations—never crowded lecture halls filled with hundreds. At Wesleyan, every class offers you direct access to professors who personally know, care for and champion your potential. Here, small classes make a big difference: ensuring personalized mentorship, meaningful connections and the space to become a confident contributor, not just another face in the crowd.

## BACHELOR OF ARTS (BA)

Traditional liberal arts degree with a language requirement.

## BACHELOR OF SCIENCE (BS)

Focuses on scientific and quantitative disciplines with additional math or computer science and lab science requirements instead of language requirement.

## BACHELOR OF NURSING (BSN)

The nursing program at Wesleyan College is accredited by the Commission on Collegiate Nursing Education. Wesleyan’s nursing simulation lab has six human patient simulators, a pediatric ICU, a medication dispensing system and other state-of-the-art facilities.

# EXPLORE WESLEYAN’S INTERDISCIPLINARY MAJORS



### SCHOOL OF MEDIA, ARTS AND CULTURE

- Advertising & Marketing Communication, BA
- Culture, Literature and Media, BA
- Arts Management, BA
- Studio Art, BA
- Music, BA



### SCHOOL OF APPLIED SCIENCES & NURSING

- Psychology, BA
- Biology, BS
- Neuroscience, BA
- Applied Mathematical Science, BA
- Environmental Studies and Sustainability, BA
- Nursing, BSN



### SCHOOL OF GLOBAL & PROFESSIONAL STUDIES

- Business Administration, BA
- Global Business, BA
- History, Politics and Global Cultural Studies, BA
- Accounting, BA
- Elementary Education, BA

Create Your Own Major: If your interests don’t neatly fit into just one subject area, you can mix and match courses from different fields to design a major that’s uniquely yours—and perfectly matched to your career dreams.



Explore Wesleyan’s 35+ available minors and Pre-Professional Pathways to law school, medical school, veterinary medicine and more!

Most Wesleyan majors qualify for Optional Practical Training (OPT), a U.S. work authorization that allows international graduates to work in their field for 12 to 36 months after graduation depending on the field of study.

## Double Wolf Program: The Wesleyan Alumnae Advantage



### Save Time

Earn Your Undergraduate and MBA Degrees in Five Years



### Save Money

Begin MBA Courses During Your Undergraduate at No Additional Cost



### Study In-Demand Concentrations

Including Artificial Intelligence, Cybersecurity, Business Analytics



# SHE WILL FIND HER VOICE

What sets Wesleyan graduates apart is that no matter their starting point, they leave distinctly prepared, immediately standing out to employers and graduate schools from thousands of other applicants. **Wesleyan's Center for Career Development** is specifically crafted to provide leadership and practical career experiences that employers value most. Four years of this immersive career preparation means you'll graduate four years ahead of other university graduates.

## Year 1: She Will Discover

Begin your journey to **real-world readiness** through career exploration while mastering everything from networking strategies to crafting standout resumes and cover letters to Robert's Rules and professional dining etiquette – skills that put you ahead.



## Year 2: She Will Build

Dive into **Wesleyan-exclusive signature programs** that deepen your creativity, innovation and leadership skills such as our Creating Equal Opportunities (CEO) Leadership Institute, the Entrepreneurship E-Lab and our Innovation & Design Thinking Bootcamps.



## Year 3: She Will Experience

Apply all your learning and new skills to **prestigious paid internships**, available on campus and off campus, and tailored to your career goals to elevate your resume and build professional confidence.



## Year 4: She Will Launch

Finalize your career plan and leverage the **connections that count** from your membership in the Wesleyan Alumnae Association, the first in the entire world! Receive mentorship from influential alumnae and industry leaders who will say your name in rooms that matter and open valuable doors to jumpstart your career through meaningful introductions.



# CEO INSTITUTE

Whether you're pursuing business, science or the arts Wesleyan's CEO (Creating Equal Opportunities) Leadership Institute prepares you to step into your career with clarity, professionalism and real-world perspective. Students admitted to this program will receive:

- Access to Wesleyan's exclusive 4:1 mentorship model through peer, career, academic and alumnae connections.
- Exposure to top CEOs, industry and community leaders, experiential learning workshops and invitations to attend leadership retreats.
- A second internship opportunity on top of Wesleyan's internship guarantee.
- A distinction upon graduation and a competitive advantage for your resume as you begin your career.





**SARU KOIRALA, '27**

**RESEARCH INTERN  
- UNIVERSITY OF  
MINNESOTA**

**POKHARA, NEPAL**

“Wesleyan prepared me through rigorous coursework, technical training, and professional development. From Google certification to campus jobs and CCD support, I gained the skills, confidence and experience that helped me succeed in my internship with the University of Minnesota and prepared me for a career in healthcare and finance.”



**THE WOMEN OF  
WESLEYAN**

**ARHANA AHUJA '27**

**INTERN - STORYTELLERS MACON  
LUDHIANA, INDIA**

“Wesleyan has helped me grow as a leader and creative thinker. Through the CEO program and the E-lab, I’ve gained communication, branding and collaboration skills that I use every day. I’ve felt supported, challenged and inspired — and that’s made all the difference in shaping who I’m becoming.”



**NUR-TAZ RAHMAN '10**

**SCIENTIST - 10X GENOMICS  
DHAKA, BANGLADESH**

“Since graduating from Wesleyan, my career has evolved with the evolving demands of technology and science. I keep pace by applying the life-long learning skills I developed at Wesleyan. Another true aid are the relationships that I built at Wesleyan - with Professors, peers, and alumni - who always cheer for your success, and help you selflessly!”



**ADRIANA GONZALEZ '24**

**J.D. CANDIDATE - CORNELL LAW  
VENEZUELA**

“Wesleyan’s rigorous academics and supportive community shaped my confidence and purpose. Through leadership roles and mentorship, I developed the skills and resilience essential for law school. The foundation I built at Wesleyan continues to guide me at Cornell Law and beyond.”





**SHE WILL HAVE A PLACE TO CALL HOME**







**Your Wesleyan journey begins the moment you land — we'll be there to welcome you!**



**Your Wesleyan experience is filled with celebration and connection. Countless clubs, events and traditions await you!**



**Your Wesleyan experience goes beyond campus - we organize weekend trips for international students to nearby Disney in Florida and many more!"**



**Wesleyan is a fully residential campus, where you can live steps from class in state-of-the-art dorms with all meals included, free laundry, full kitchenettes - in a safe campus with protected access at all entry points.**



# Macon

GEORGIA

**Vibrant downtown streets. Soulful live music. Blooming cherry trees. Peaceful riverside trails.**

**This is Macon.**

**Georgia - ranked America's #1 state for business growth  
- pairs booming career opportunities with mild winters,  
warm Southern hospitality and lower living costs.**

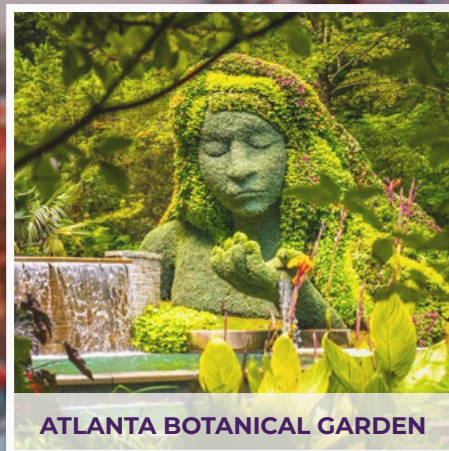
**This is Georgia.**



GEORGIA AQUARIUM



DOWNTOWN MACON



ATLANTA BOTANICAL GARDEN



ATRIUM HEALTH AMPHITHEATER



MERCEDES BENZ STADIUM



CHERRY BLOSSOM PARADE

Macon is less than a 90-minute drive from the world's busiest international airport and 16 Fortune 500 head offices in Atlanta, offering prime career connections, and easy flights across the U.S. and anywhere in the world!



10 BEST PLACES  
TO VISIT IN 2025

WSJ

AMERICA'S  
TOP 10  
BEST TOWNS  
TO VISIT IN 2024

CNN

THE WORLD'S  
GREATEST  
PLACES OF 2025

TIME



Scan the QR code to explore  
Visit Macon on Instagram and  
learn more at [visitmacon.org](https://visitmacon.org)



# ADMISSION REQUIREMENTS

Wesleyan welcomes the world to campus. We recognize national curricula from all countries and evaluate a broad range of international curricula, including but not limited to:

- International U.S. Curriculum High Schools
- International Baccalaureate Diploma Programme (IBDP)
- International Baccalaureate Career-related Programme (IBCP)
- British Curricula (AS-Level, A-Level and/or BTEC)
- Indian Curricula (CBSE, ISC, State Boards and NIOS)
- Caribbean Examinations Council (CXC)
- West Africa Examinations Council (WAEC & NECO)

## FEES/SCHOLARSHIPS



International Tuition  
**\$26,450**



International Fees  
**\$7,430**  
*Includes textbooks, course materials and health insurance*



Residence & Meal Plan  
**\$12,620**



Total  
**\$46,500**

*Estimated costs are for an academic year (August to April) and are based on a typical first-year course load. Fees are based on the 2025-26 academic year and are reviewed regularly. You can find all the most up-to-date tuition and fee amounts on our website.*

### Entrance Scholarships

Worth \$40,000 to \$64,000 over four years (\$10,000 to \$16,000 per year), these are awarded based on your academic results. You will be automatically considered for these awards during the regular application process; no supplemental application is required.

### CEO Women in Leadership Scholarship

Worth \$80,000 over four years (\$20,000 per year), this award includes access to Wesleyan College's prestigious CEO Institute with lifechanging opportunities for your leadership journey and future career. A supplemental application is required and must be submitted by **February 2, 2026**.

# APPLYING TO WESLEYAN

## STEP 1:

Apply early using the Common Application or using our direct application at [www.wesleyancollege.edu](http://www.wesleyancollege.edu) and pay your \$30 application fee.

## STEP 2:

Submit your scholarship application before **February 2, 2026**.

## STEP 3:

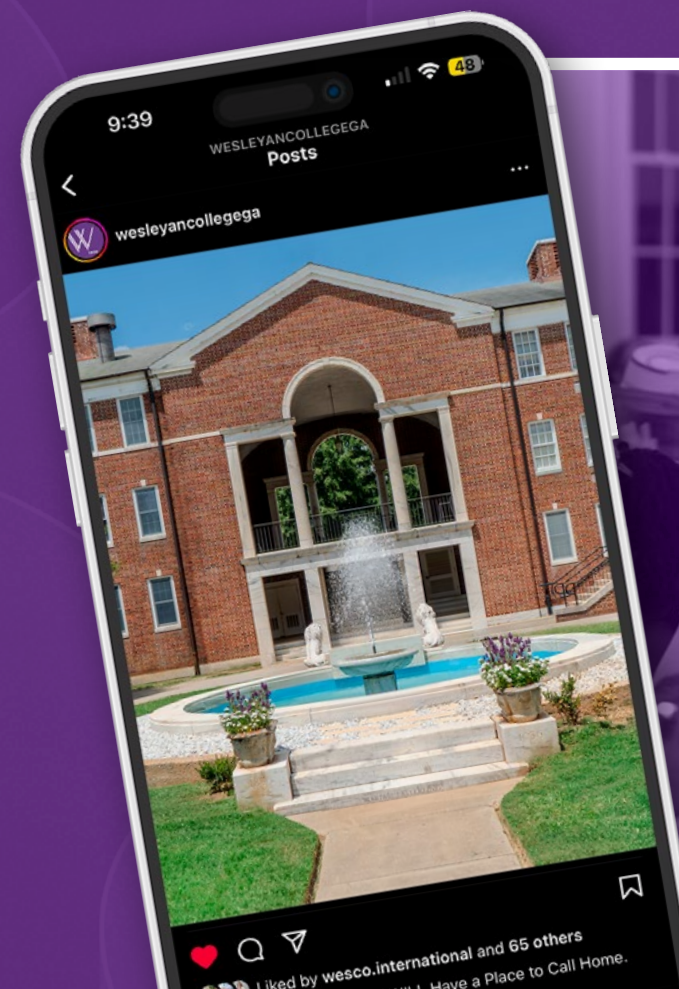
Secure your seat at Wesleyan College by paying your \$1,000 deposit by the deposit deadline stated on your Letter of Acceptance (LOA).

## STEP 4:

After paying your deposit, we'll issue you your I-20, support you and your family throughout the F-1 Visa process and pick you up from Atlanta Hartsfield-Jackson International Airport to personally welcome you to Wesleyan and your new home on campus!



For full admission requirements and application instructions, scan to visit our website for international applicants.



## GET CONNECTED



WESLEYANCOLLEGE GA



@WESLEYANCOLLEGE GA



Scan to follow us on Instagram!





WESLEYAN

ACCELERATING EQUALITY FOR WOMEN SINCE 1836

SHE HAS.  
SHE WILL.  
**WILL YOU?**



[wesleyancollege.edu](http://wesleyancollege.edu)



Wesleyan College  
is a member of  
The Common Application



Wesleyan College is accredited by the  
Southern Association of Colleges and  
Schools Commission on Colleges (SACSCOC)

4760 FORSYTH ROAD / MACON, GEORGIA 31210